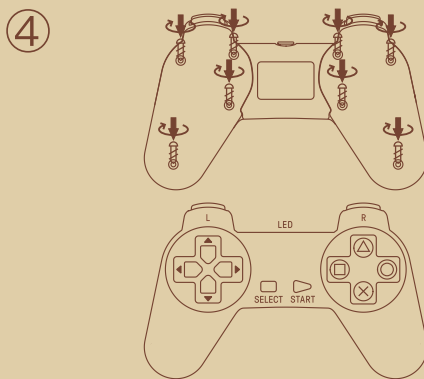
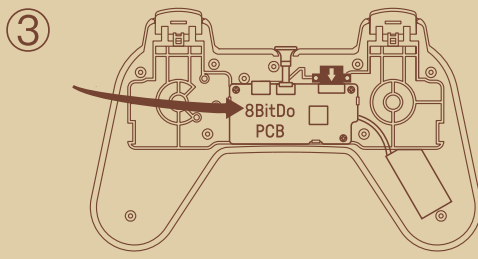
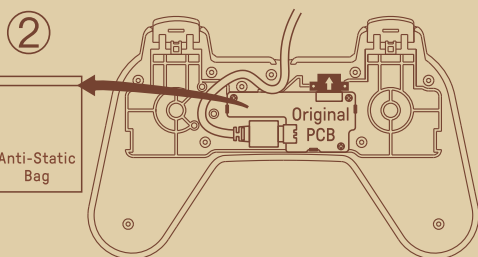
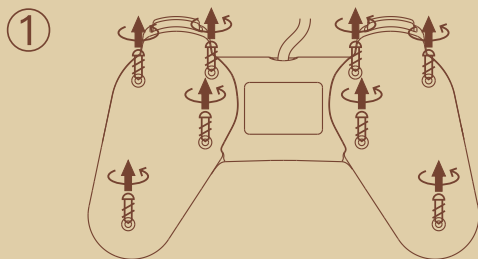


Instructions - P30 classic Modkit

8BitDo®

* Please handle it with care.

We are not responsible for any damage caused in use.



Switch



- 1 - press **□ + start** to turn on the controller
 - 2 - press and hold **select** for 3 seconds to enter pairing mode. Blue LED will rapidly blink
 - 3 - go to your Switch Home Page to click on Controllers, then click on Change Grip/Order. LED becomes solid when connection is successful
 - 4 - controller will auto reconnect to your Switch with the press of **start** once it has been paired
- when connected to your Switch, **select + down** = Switch HOME button

Android (D - input)



- 1 - press **× + start** to turn on the controller
- 2 - press and hold **select** for 3 seconds to enter pairing mode. Blue LED will rapidly blink
- 3 - go to your Android device's Bluetooth setting, pair with [8BitDo P30 classic Modkit]. LED becomes solid when connection is successful
- 4 - controller will auto reconnect to your Android device with the press of **start** once it has been paired

Windows (X - input)



- 1 - press **△ + start** to turn on the controller
- 2 - press and hold **select** for 3 seconds to enter pairing mode. Blue LED will rapidly blink
- 3 - go to your Windows device's Bluetooth setting, pair with [8BitDo P30 classic Modkit]. LED becomes solid when connection is successful
- 4 - controller will auto reconnect to your Windows device with the press of **start** once it has been paired

macOS



- 1 - press **○ + start** to turn on the controller
- 2 - press and hold **select** for 3 seconds to enter pairing mode. Blue LED will rapidly blink
- 3 - go to your macOS device's Bluetooth setting, pair with [Wireless Controller]. LED becomes solid when connection is successful
- 4 - controller will auto reconnect to your macOS device with the press of **start** once it has been paired

battery



status -  LED indicator -

low battery mode  LED blinks in red

battery charging  LED stays solid red

• rechargeable via USB cable with 90 minute charging time

support



• please visit support.8bitdo.com for further information & additional support

Switch



1. 轻按方块键 + START 键开启控制器，再按住 SELECT 键 3 秒进入配对状态（指示灯快闪）。
 2. 打开 Switch 主机 Controllers 选项，选择 Change Grip/ Order 选项，等待连接，连接成功后控制器蓝灯常亮。
 3. 下次使用按 START 键可自动连接。
- * 热键：SELECT + DOWN 可作为 HOME 键。

Android (D - input)



1. 轻按叉号键 + START 键开启控制器，再按住 SELECT 键 3 秒进入配对状态（指示灯快闪）。
2. 打开 Android 设备蓝牙选项，选择搜索到的 [8BitDo P30 classic Modkit] 进行连接，连接后控制器蓝灯常亮。
3. 下次使用按 START 键可自动连接。

Windows (X - input)



1. 轻按三角键 + START 键开启控制器，再按住 SELECT 键 3 秒进入配对状态（指示灯快闪）。
2. 打开 Windows 设备蓝牙选项，选择搜索到的 [8BitDo P30 classic Modkit] 进行连接，连接成功后控制器蓝灯常亮。
3. 下次使用按 START 键可自动连接。

macOS



1. 轻按圆圈键 + START 键开启控制器，再按住 SELECT 键 3 秒进入配对状态（指示灯快闪）。
2. 打开 macOS 设备蓝牙选项，选择搜索到的 [Wireless Controller] 进行连接，连接成功后控制器蓝灯常亮。
3. 下次使用按 START 键可自动连接。

电源



电量状态  指示灯状态

低电量  红灯闪

充电中  红灯亮

* 可使用配备的 USB 线进行充电，充电时间约 90 分钟。

固件升级



* 请访问 <http://support.8bitdo.cn/> 了解详细信息。